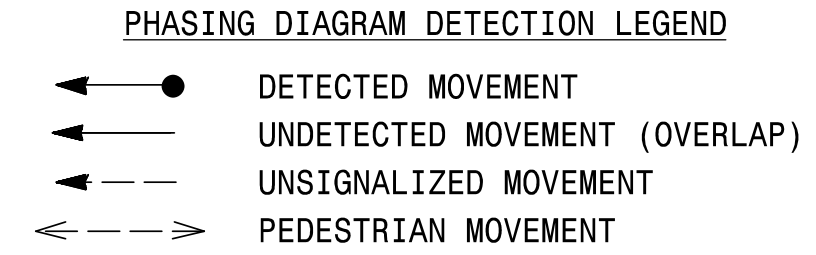
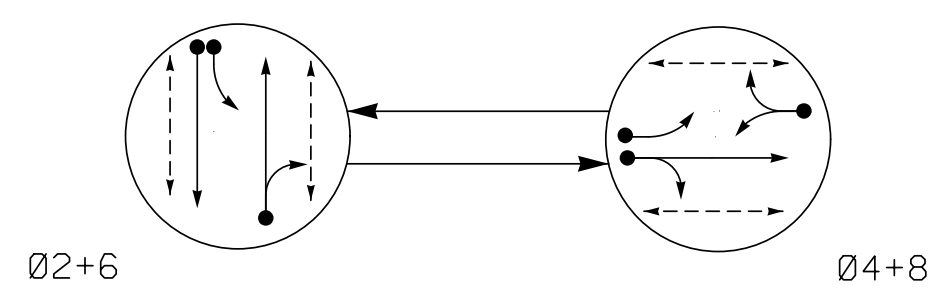


PHASING DIAGRAM



EV PREEMPT PHASES  
(Medium Priority)

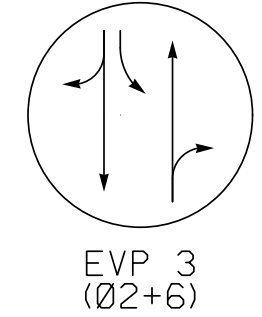


TABLE OF OPERATION

SIGNAL FACE	PHASE			
	02+6	04+8	EVP 3	FLASH
21, 22	R	G	R	G
41, 42	R	G	R	R
61, 62	G	R	G	Y
81, 82, 83	R	G	R	R
P21, P22	W	DW	DW	DRK
P41, P42	DW	W	DW	DRK
P61, P62	W	DW	DW	DRK
P81, P82	DW	W	DW	DRK

OASIS 2070 LOOP & DETECTOR INSTALLATION CHART

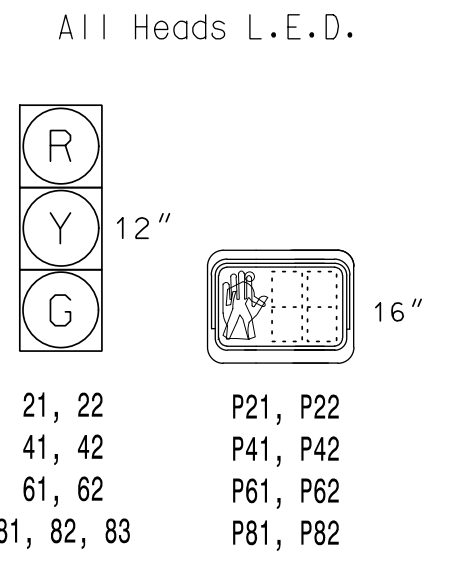
LOOP	SIZE (FT)	DISTANCE FROM STOPBAR (FT)	TURNS	NEW LOOP	DETECTOR PROGRAMMING							
					PHASE	CALLING	EXTENSION	FULL TIME DELAY	STRETCH TIME	DELAY TIME	SYSTEM LOOP	NEW CARD
2A	6X40	0	2-4-2	Y	2	Y	Y	-	-	-	-	Y
4A	6X40	0	2-4-2	Y	4	Y	Y	-	-	-	-	Y
4B	6X40	0	2-4-2	Y	4	Y	Y	-	-	10	-	Y
6A	6X40	0	2-4-2	Y	6	Y	Y	-	-	-	-	Y
6B	6X40	0	2-4-2	Y	6	Y	Y	-	-	-	-	Y
8A	6X40	0	2-4-2	Y	8	Y	Y	-	-	5	-	Y

2 PHASE  
FULLY ACTUATED W/  
EMERGENCY VEHICLE PREEMPTION  
(ISOLATED)

NOTES

- Refer to "Roadway Standard Drawings NCDOT" dated January 2018, "Standard Specifications for Roads and Structures" dated January 2018, and all applicable sections of the latest version of the generic Project Special Provisions. The PSP can be accessed at the following website: <https://connect.ncdot.gov/resources/safety/Pages/ITS-Design-Resources.aspx>
- Do not program signal for late night flashing operation unless otherwise directed by the Engineer.
- Set all detector units to presence mode.
- Locate new cabinet so as not to obstruct sight distance of vehicles turning right on red.
- Omit "WALK" and flashing "DON'T WALK" with no pedestrian calls.
- Program pedestrian heads to countdown the flashing "Don't Walk" time only.
- Metal pole and Mastarms and pedestals will be decorative with black powder coating. All signal and pedestrian heads will be black.
- Contractor to use City approved decorative signal equipment.
- Contractor to confirm elevations for metal pole prior to ordering.
- Install GPS emergency preemption system per manufacturers instructions to achieve preemption needed, as shown in phasing diagram.

SIGNAL FACE I.D.



OASIS 2070 EV PREEMPT

FUNCTION	EVP 3
Interval 1 - Dwell Green	255
Interval 1 - Dwell Yellow	0.0*
Interval 1 - Dwell Red	0.0*
Interval 5 - Exit Green	1
Interval 5 - Yellow	0.0
Interval 5 - Red	0.0
Exit Phase(s)	2+6
Priority	MED
Delay Time	0.0
Min Green Before Pre	1
Ped Clear Before Pre	0
Yellow Clear Before Pre	0.0*
Red Clear Before Pre	0.0*
Dwell Min Time	10
Enable Backup Protection	N
Ped Clear Through Yellow	Y
Omit Overlaps	-
Preempt Extend**	2

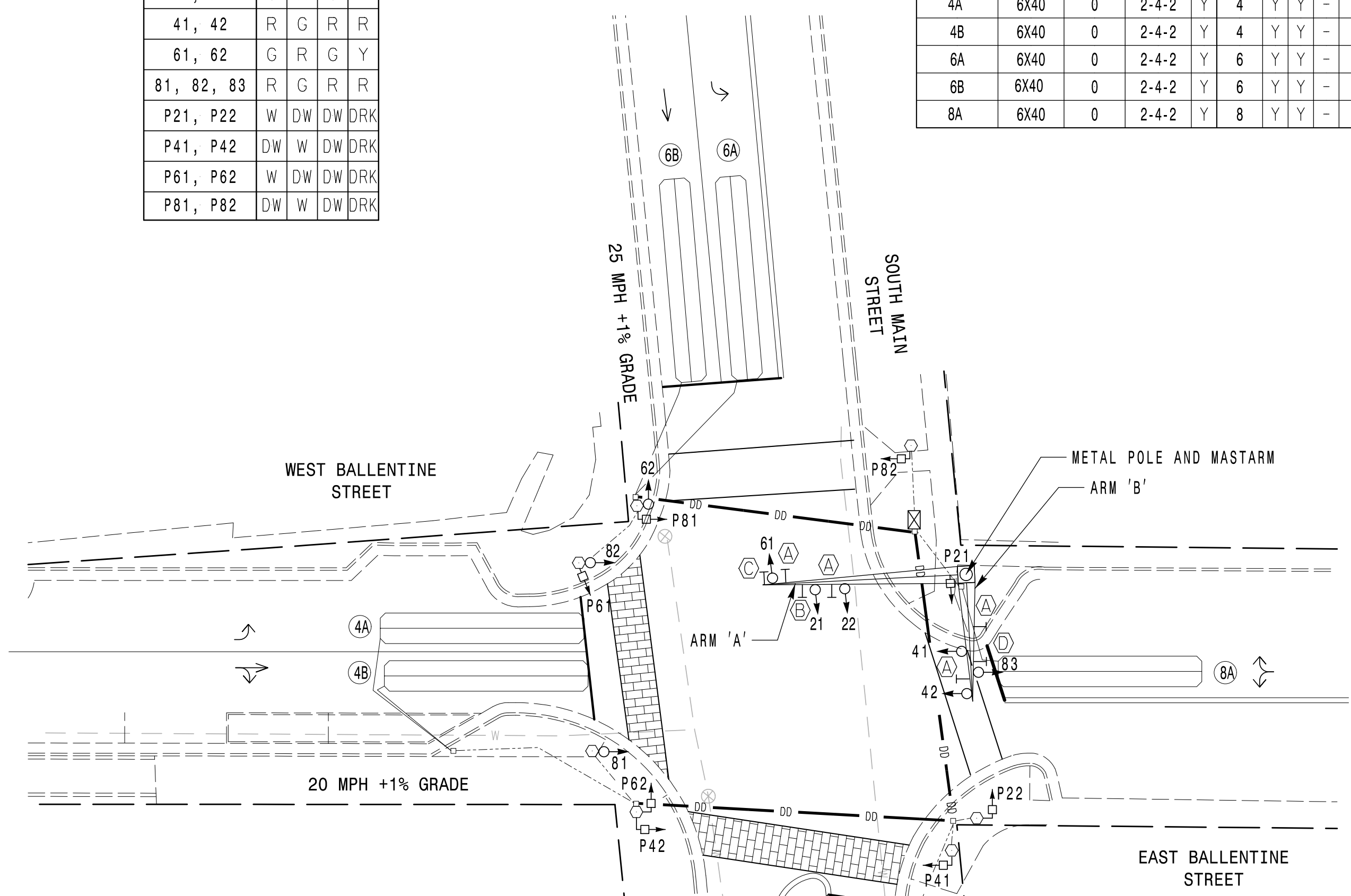
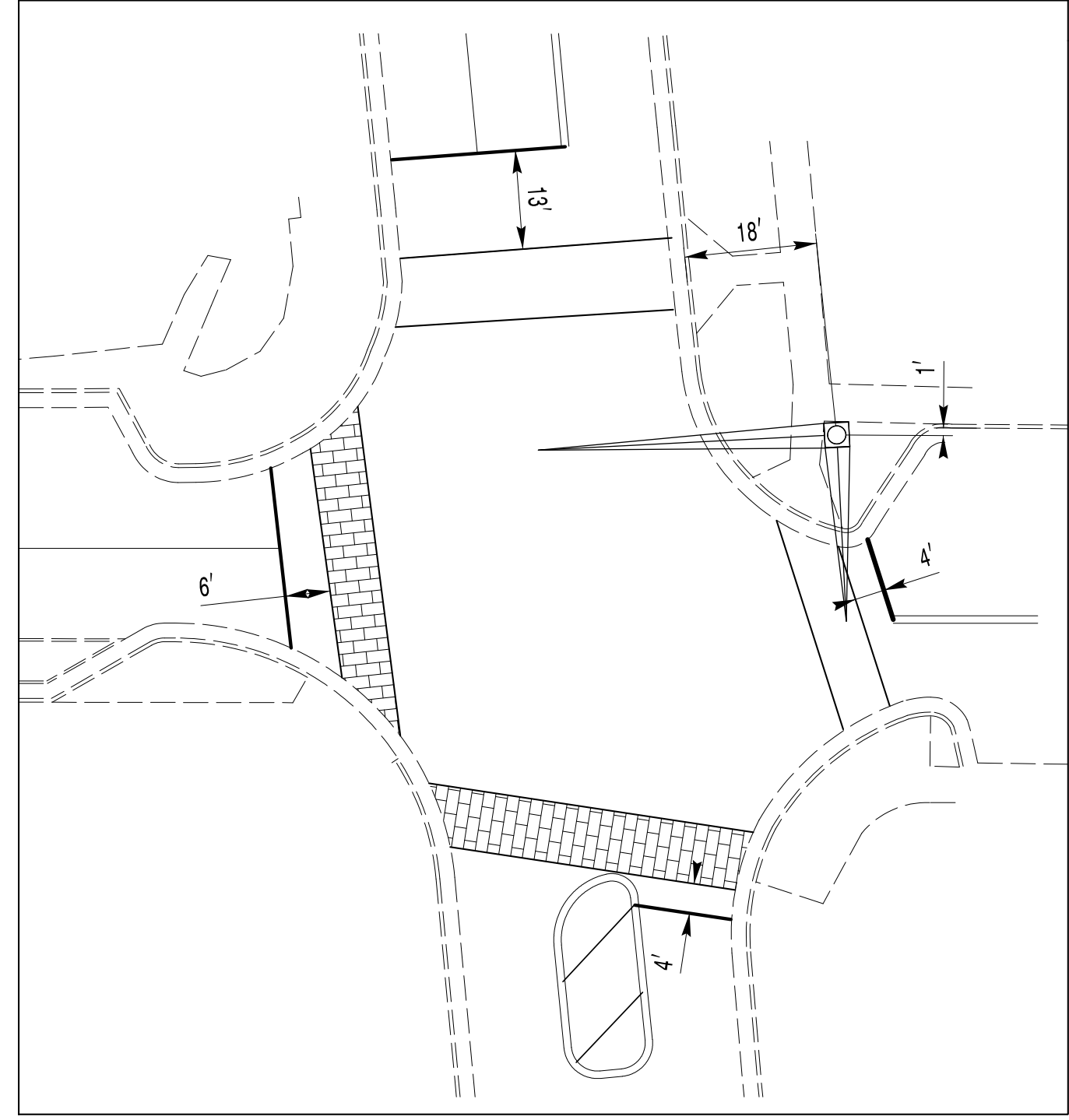
\* Time defaults to time used for phase during normal operation  
\*\* Program Timing on Optical Detection Unit

OASIS 2070 TIMING CHART

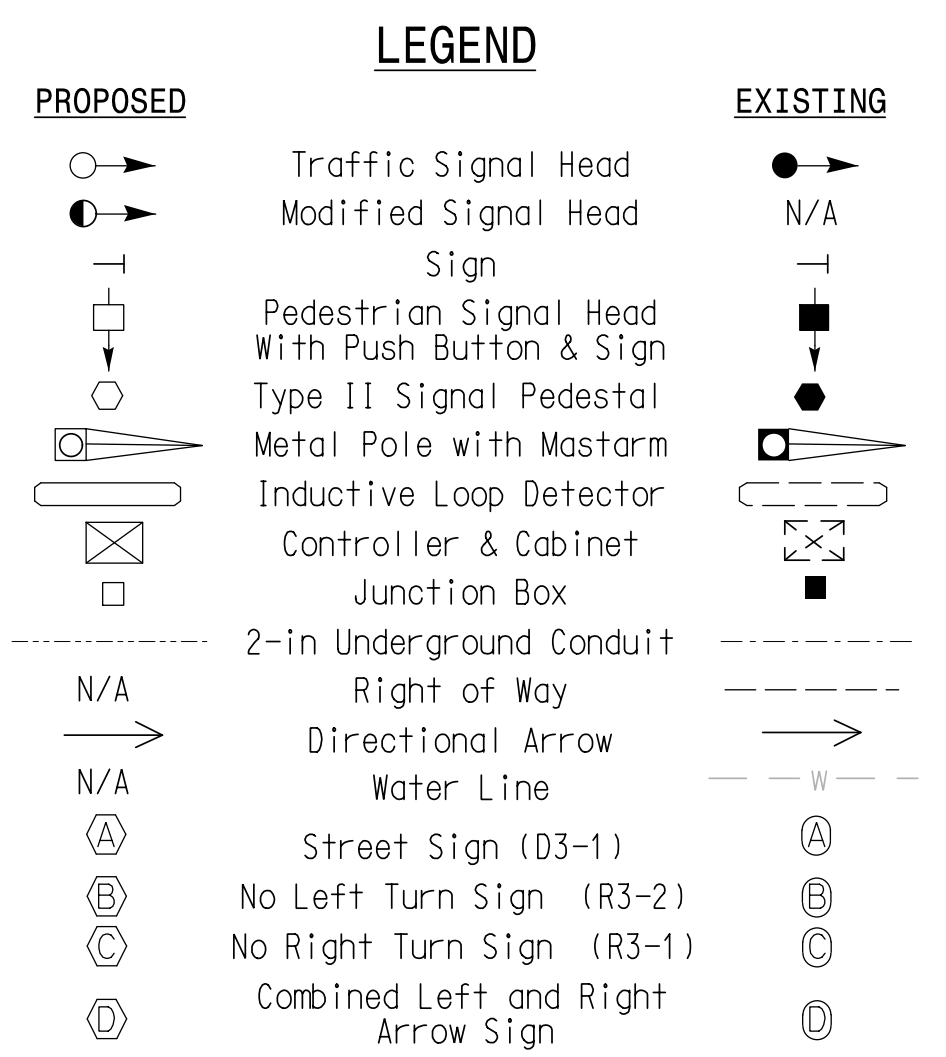
FEATURE	PHASE			
	2	4	6	8
Min Green 1 *	10	7	10	7
Extension 1 *	3.0	2.0	3.0	2.0
Max Green 1 *	40	20	40	20
Yellow Clearance	3.2	3.0	3.1	3.0
Red Clearance	2.2	2.5	2.7	2.5
Walk 1 *	7	7	7	7
Don't Walk 1	6	10	9	9
Seconds Per Actuation *	-	-	-	-
Max Variable Initial *	-	-	-	-
Time Before Reduction *	-	-	-	-
Time To Reduce *	-	-	-	-
Minimum Gap	-	-	-	-
Recall Mode	MIN RECALL	-	MIN RECALL	-
Vehicle Call Memory	YELLOW	-	YELLOW	-
Dual Entry	-	-	-	-
Simultaneous Gap	ON	ON	ON	ON

\* These values may be field adjusted. Do not adjust Min Green and Extension times for phases 2 and 6 lower than what is shown. Min Green for all other phases should not be lower than 4 seconds.

STOPLINE AND POLE LOCATION DIAGRAM



THIS SUPERSEDES SIGNAL PLANS  
ORIGINALLY SEALED 4/26/2018



NEW INSTALLATION

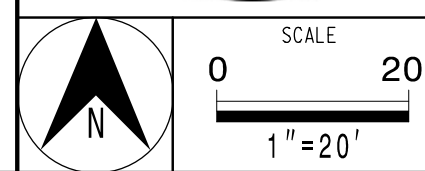


SOUTH MAIN STREET  
AT  
WEST BALLENTINE STREET

WAKE COUNTY      HOLLY SPRINGS

PLAN DATE: JANUARY 2018      REVIEWED BY: SL PHILLIPS  
PREPARED BY: SP PENNINGTON      REVIEWED BY: KP BAUMANN

PLANS PREPARED IN THE OFFICE OF:  
**KimleyHorn**  
NC License #F-0102  
421 Fayetteville Street, Suite 600  
Raleigh, NC 27601  
(919) 677-2000



DOCUMENT NOT CONSIDERED  
FINAL UNLESS ALL  
SIGNATURES COMPLETED

SEAL

12/13/2018

SIG. INVENTORY NO.

12/13/2018 12:15:20 PM susan.pennington K:\R\AL\1P\DM-SIGNAL\SIG1229056\_Bal\lent\trn654 - Signal\_Des\gn6Bal\lent\trn6\_2018.dgn