

RECEIVED

OCT 31 2002

PLANNING & ZONING

*NOTE: SITE LAYOUT BY SPAULDING & NORRIS, PA DESIGN CONSULTANTS, 972 TRINITY ROAD, RALEIGH, NORTH CAROLINA 27607, (919) 854-7990.

SIGN LOCATIONS ARE ILLUSTRATIVE. EXACT LOCATIONS TO BE DEFINED AT TIME OF PERMIT APPLICATION.

SITE DATA TABLE

OWNER: H.F. INVESTORS, LLC
P.O. BOX 3006
CARY, NORTH CAROLINA 27519
PIN # p/o 0649.02-06-8392
TOWNSHIP: HOLLY SPRINGS
TOWN: HOLLY SPRINGS
COUNTY: WAKE COUNTY
ZONING: C-1
TOTAL ACREAGE: 0.81 Ac.
TOTAL BUILDING SIZE: 5,700 SqFt.
PARKING REQUIRED: MAXIMUM SPACES ALLOWED = 4 PER 1000 SF. (23 SPACES)
PARKING PROVIDED: 22 SPACES
HANDICAP SPACES REQUIRED: 2 SPACES
HANDICAP SPACES PROVIDED: 2 SPACES
VEHICULAR SURFACE AREA: 10,755 SqFt.
TOTAL IMPERVIOUS AREA: 22,394 SqFt.
FUTURE ROADWAY AND ALONG N.C. 55: SIDEWALK = 5,339 SqFt. BUILDING = 5,300 SqFt. PARKING AND DRIVES = 10,755 SqFt. TOTAL LANSCAPED AREA: 14,195 SqFt.

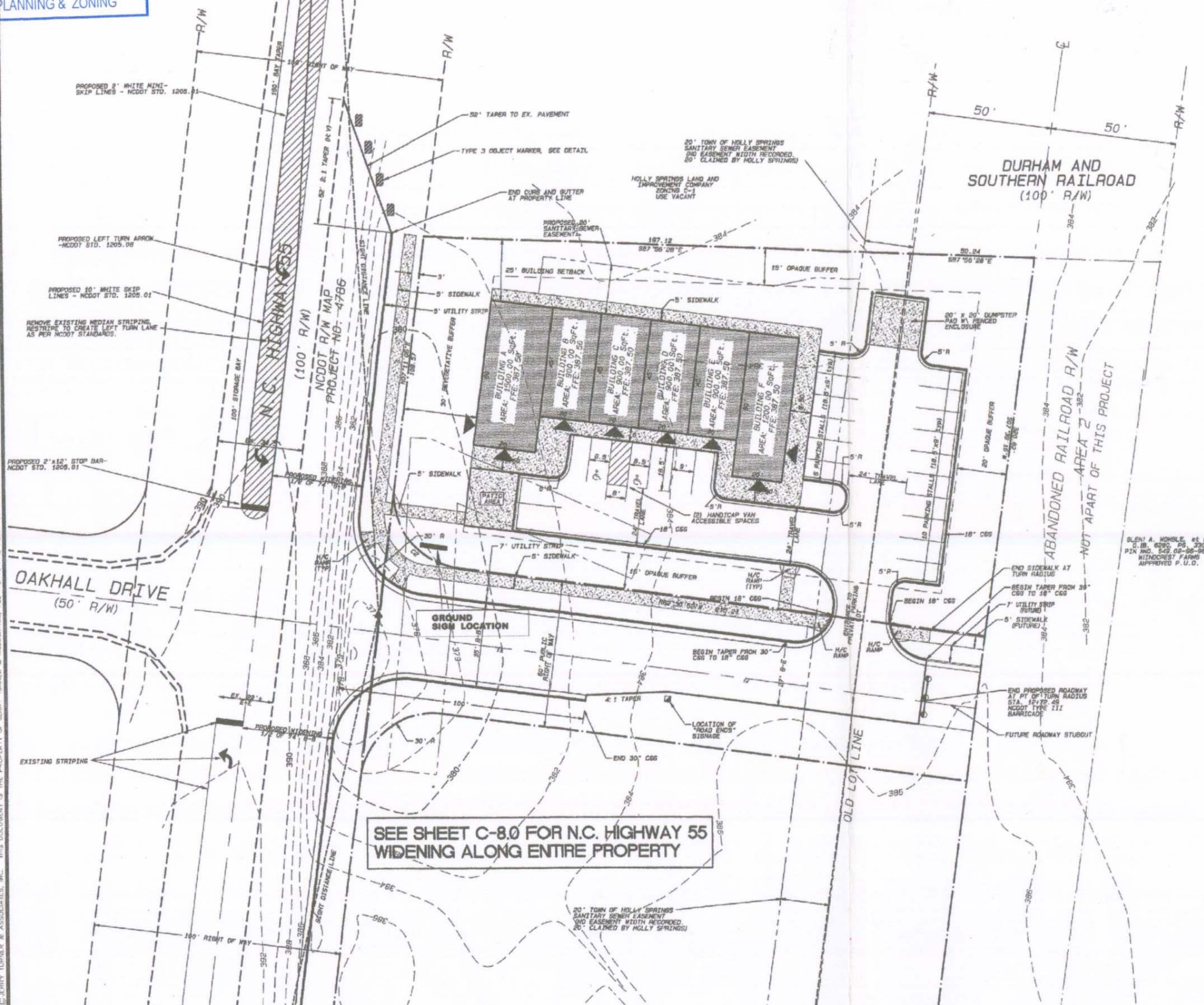


JERRY TURNER & ASSOCIATES, INC.
Landscape Architecture
Land Planning
Environmental Design

805 Jones Franklin Road
Raleigh, North Carolina 27606
(919) 851-7150 fax (919) 851-7547

277 S.E. 5th Avenue
Delray Beach, Florida 33483
(561) 276-0453 fax (561) 272-7593

PROJECT: WYNCREST COMMERCIAL
HOLLY SPRINGS, NC



SIGN LEGEND

- WALL SIGN (indicated by a triangle symbol)
GROUND SIGN TO BE DOUBLE-FACED (indicated by a rectangle symbol)

SEE SHEET C-8.0 FOR N.C. HIGHWAY 55 WIDENING ALONG ENTIRE PROPERTY

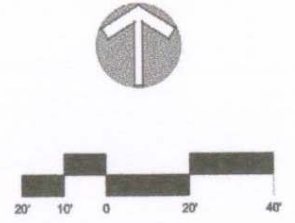


Table with project metadata including:
- REVISIONS: (empty)
- DRAWN: (empty) CHECKED: (empty)
- SCALE: (empty) DATE: 31 OCTOBER 2002
- TITLE: SIGN LOCATIONS
- FILE NO.: (empty) JOB NO.: (empty)
- SEAL: (empty) DRAWN BY: (empty)

S-1