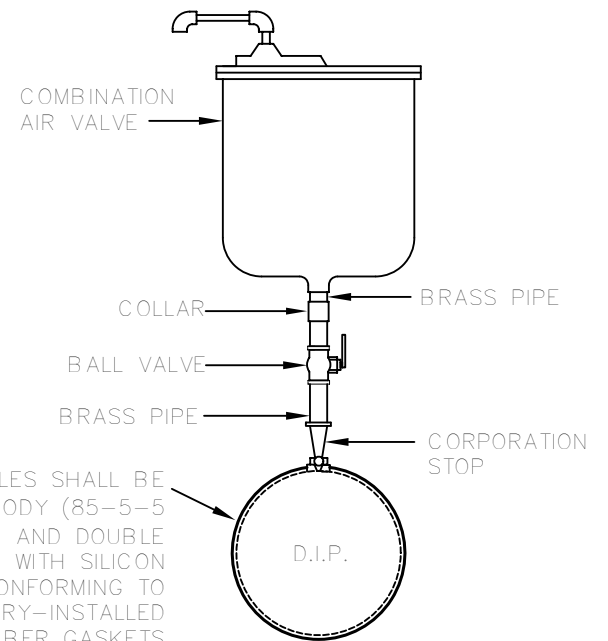


NOTE: IF DRAIN PIPE TO DAYLIGHT IS NOT ACHIEVABLE THEN MUST RECEIVE APPROVAL FROM DIRECTOR OF ENGINEERING FOR AN ACCEPTABLE STANDARD AIR RELEASE.



PIPING DETAIL

SERVICE SADDLES SHALL BE BRONZED BODY (85-5-5 WATERWORKS BRASS) AND DOUBLE STRAP FOR TAPS WITH SILICON BRONZE NUTS CONFORMING TO ASTM A98 AND FACTORY-INSTALLED GRADE 60 RUBBER GASKETS

- NOTES:
1. TAP SIZE AND ISOLATION VALVE TO BE SAME SIZE AS AIR VALVE.
  2. ALL PIPING AND FITTINGS, IN THE MANHOLE, SHALL BE BRASS OR BRONZE UNLESS NOTED.
  3. MANHOLE STEPS SHALL BE PLACED 16" O.C.
  4. CONCENTRIC CONES MAY BE USED FOR AIR VALVE MANHOLES LESS THAN 5' IN DEPTH.
  5. MANHOLE INTERIOR SHALL BE EPOXY COATED FOR SEWER MANHOLES.
  6. AIR VALVE TO BE MANUFACTURED BY A.R.I.

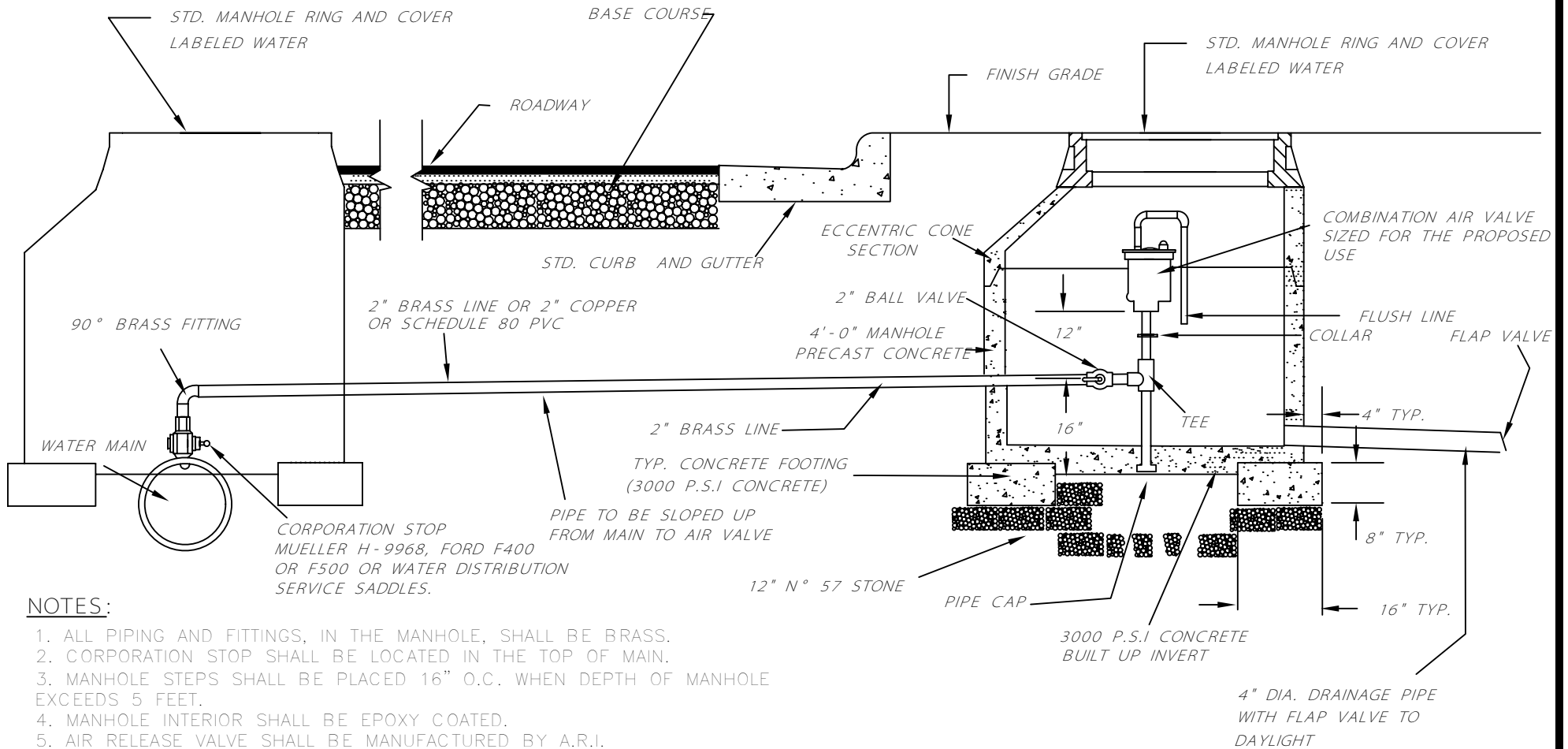
DRAWING NOT TO SCALE

STANDARD COMBINATION AIR VALVE MANHOLE FOR RECLAIMED WATER, OR SEWER MAINS

TOWN OF HOLLY SPRINGS ENGINEERING DEPARTMENT

STANDARD DETAIL NUMBERHS1101	
DATE	REVISIONS
4/13/10	





**NOTES:**

1. ALL PIPING AND FITTINGS, IN THE MANHOLE, SHALL BE BRASS.
2. CORPORATION STOP SHALL BE LOCATED IN THE TOP OF MAIN.
3. MANHOLE STEPS SHALL BE PLACED 16" O.C. WHEN DEPTH OF MANHOLE EXCEEDS 5 FEET.
4. MANHOLE INTERIOR SHALL BE EPOXY COATED.
5. AIR RELEASE VALVE SHALL BE MANUFACTURED BY A.R.I.

NOTE: IF DRAIN PIPE TO DAYLIGHT IS NOT ACHIEVABLE THEN MUST RECEIVE APPROVAL FROM DIRECTOR OF ENGINEERING FOR AN ACCEPTABLE STANDARD AIR RELEASE.

DRAWING NOT TO SCALE

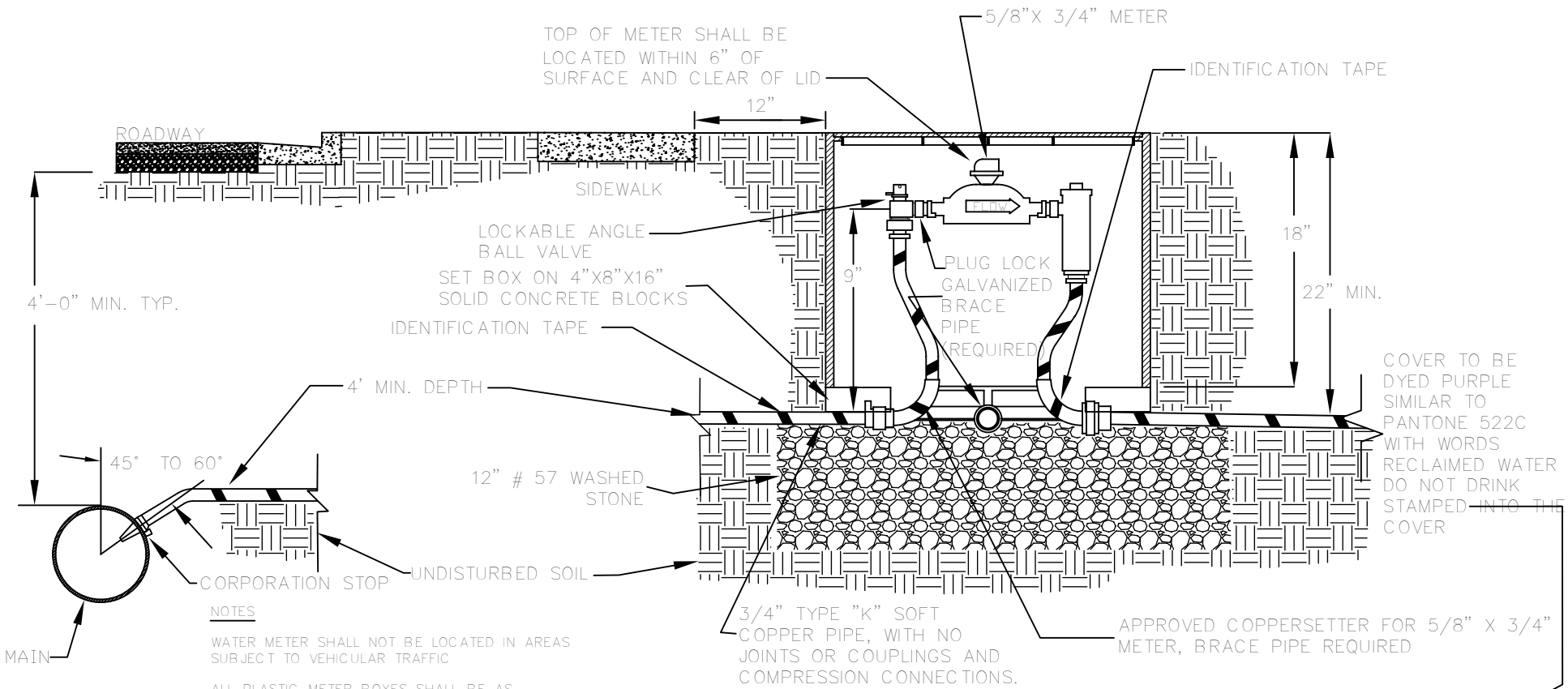
STANDARD COMBINATION AIR VALVE MANHOLE OFFSET FROM MAIN  
FOR RECLAIMED WATER, OR SEWER MAINS

STANDARD DETAIL NUMBER HS1102

DATE	REVISIONS
4/13/10	

TOWN OF HOLLY SPRINGS ENGINEERING DEPARTMENT





**NOTES**

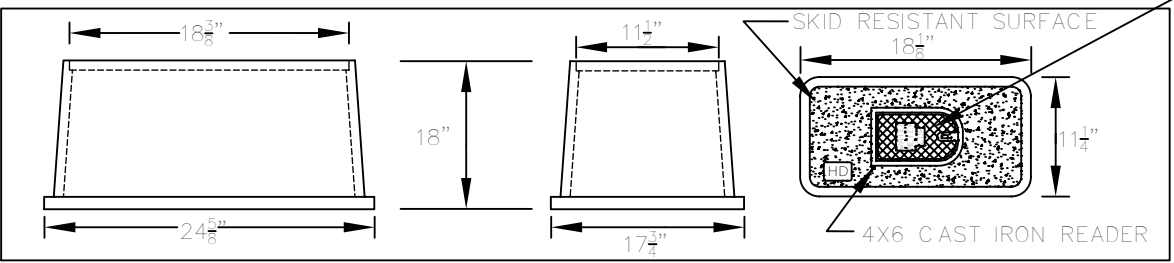
WATER METER SHALL NOT BE LOCATED IN AREAS SUBJECT TO VEHICULAR TRAFFIC

ALL PLASTIC METER BOXES SHALL BE AS MANUFACTURED BY MID-STATE PLASTICS WITH HEAVY DUTY RATED NON-LOCKING POLYMER CEMENT COVER AS CAST IRON READER DOOR AS APPROVED BY THE TOWN

ALL FIBERGLASS METER BOXES WITH POLYMER CEMENT COVERS SHALL BE AS MANUFACTURED BY CDR SYSTEMS CORPORATION WITH A HEAVY DUTY RATED COVER AND CAST IRON READER DOOR AS APPROVED BY THE TOWN

ALL SERVICE LINES, VALVES AND FITTINGS SHALL COMPLY WITH AWWA C800

PURPLE IDENTIFICATION TAPE MARKED: "CAUTION RECLAIM WATER DO NOT DRINK"



STANDARD HEAVY DUTY POLYMER CONCRETE METER BOX

DRAWING NOT TO SCALE

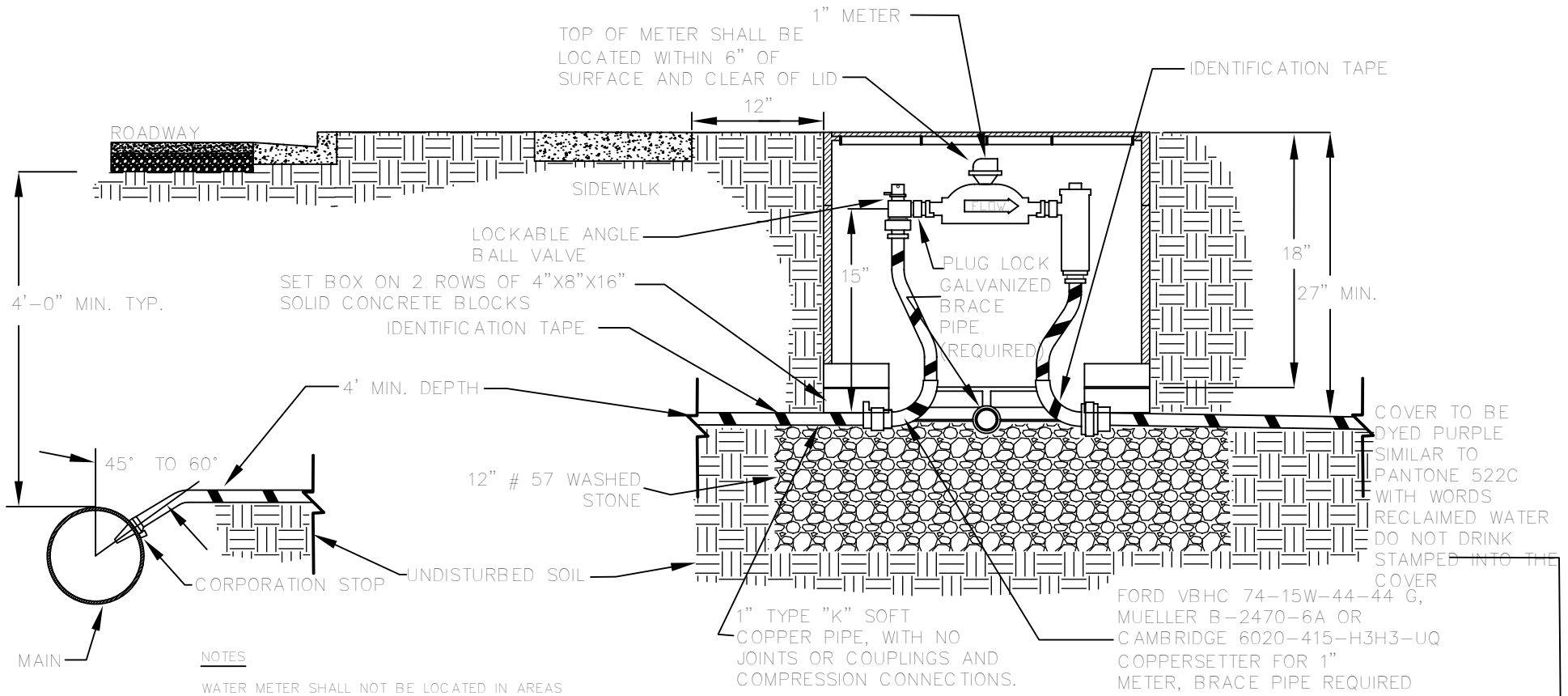
STANDARD 3/4" WATER SERVICE & METER BOX INSTALLATION  
(FOR RECLAIMED WATER SERVICE)

TOWN OF HOLLY SPRINGS ENGINEERING DEPARTMENT

STANDARD DETAIL NUMBERHS1104

DATE	REVISIONS
8/4/17	





**NOTES**

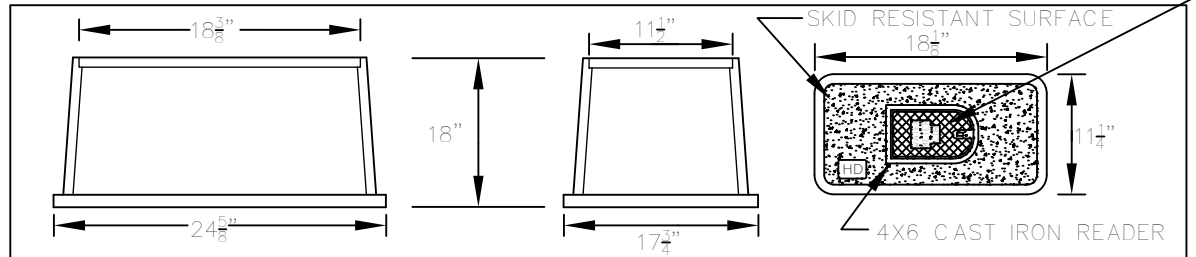
WATER METER SHALL NOT BE LOCATED IN AREAS SUBJECT TO VEHICULAR TRAFFIC

ALL PLASTIC METER BOXES SHALL BE AS MANUFACTURED BY MID-STATE PLASTICS WITH HEAVY DUTY RATED NON-LOCKING POLYMER CEMENT COVER AS CAST IRON READER DOOR AS APPROVED BY THE TOWN

ALL FIBERGLASS METER BOXES WITH POLYMER CEMENT COVERS SHALL BE AS MANUFACTURED BY CDR SYSTEMS CORPORATION WITH A HEAVY DUTY RATED COVER AND CAST IRON READER DOOR AS APPROVED BY THE TOWN

ALL SERVICE LINES, VALVES AND FITTINGS SHALL COMPLY WITH AWWA C800

PURPLE IDENTIFICATION TAPE MARKED: "CAUTION RECLAIM WATER DO NOT DRINK"



STANDARD HEAVY DUTY POLYMER CONCRETE METER BOX

DRAWING NOT TO SCALE

STANDARD 1" WATER SERVICE & METER BOX INSTALLATION  
(FOR RELCAIMED WATER SERVICE)

STANDARD DETAIL NUMBERHS1105

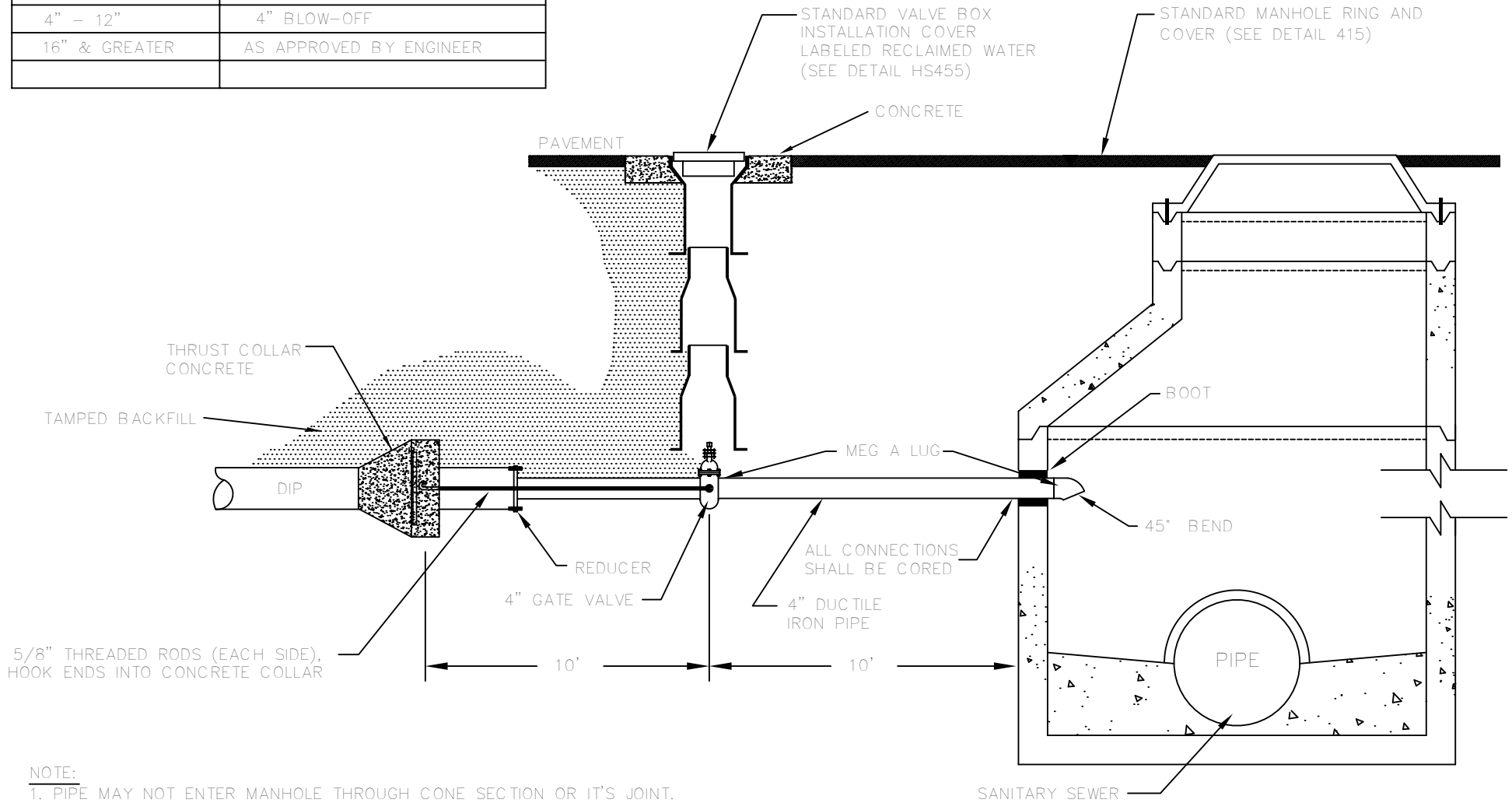
DATE REVISIONS

8/4/17

TOWN OF HOLLY SPRINGS ENGINEERING DEPARTMENT



MAIN SIZE	END PIPE SIZE
4" - 12"	4" BLOW-OFF
16" & GREATER	AS APPROVED BY ENGINEER



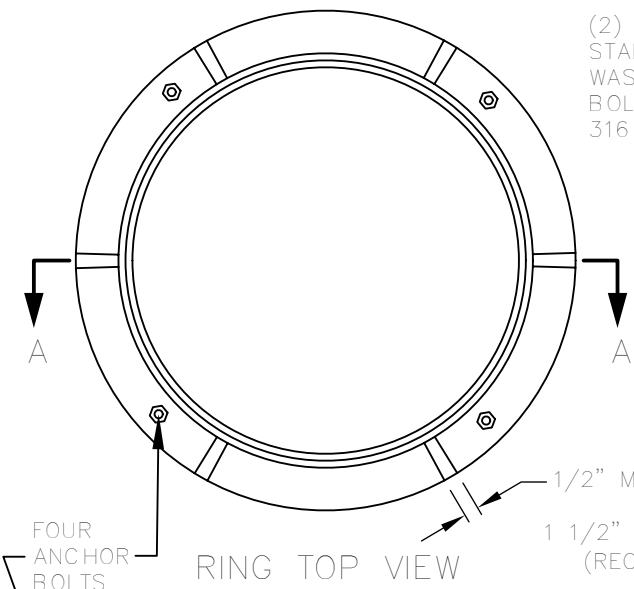
- NOTE:
1. PIPE MAY NOT ENTER MANHOLE THROUGH CONE SECTION OR IT'S JOINT.
  2. RODS SHALL BE "HOOKED" INTO THRUST COLLAR.
  3. FITTINGS INSIDE MH TO BE COATED.

DRAWING NOT TO SCALE

STANDARD RECLAIMED WATER 4" BLOW-OFF ASSY  
TOWN OF HOLLY SPRINGS ENGINEERING DEPARTMENT

STANDARD DETAIL NUMBER HS1107	
DATE	REVISIONS
7/24/09	

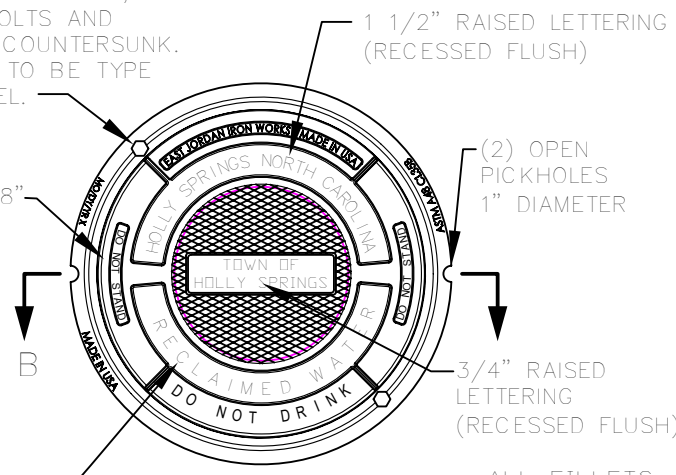




**RING TOP VIEW**

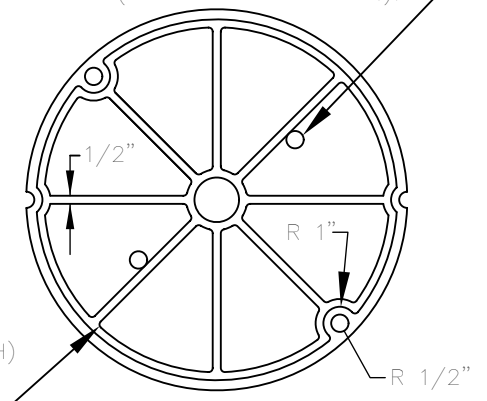
(2) 1/2" x 1 3/4" HEX HEAD, STAINLESS STEEL BOLTS AND WASHERS AT 180° COUNTERSUNK. BOLTS & WASHERS TO BE TYPE 316 STAINLESS STEEL.

FILLETS @ R 1/8"

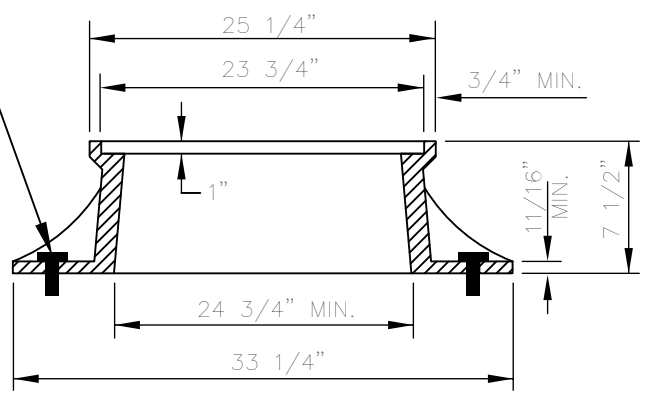


**COVER TOP VIEW**

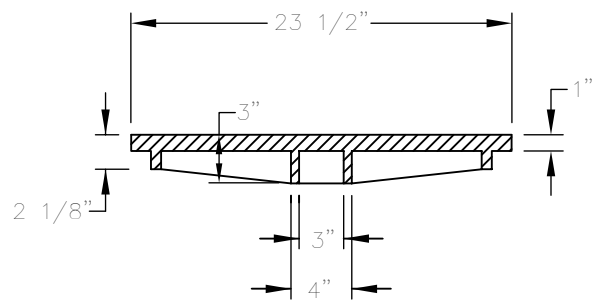
2 VENT HOLES TO BE SPACED OPPOSITE TO EACH OTHER IN OUTER RING (HOLES TO BE 1" DIA.).



**COVER BOTTOM VIEW**



**SECTION "A-A"**



**SECTION "B-B"**

MINIMUM WEIGHTS	
RING	180
COVER	120
TOTAL	300

**SPECIFICATIONS:**

1. CLASS 35 GREY IRON.
2. COMPLIES WITH ASTM A48 CL35B.
3. CASTING TO BE COATED WITH A WATER BASED ASPHALT PAINT (BLACK).
4. ALL LETTERING SHALL BE CLEAN, CRISP, AND CLEARLY LEGIBLE.
5. DOMESTICALLY MADE & MANUFACTURED IN THE USA.

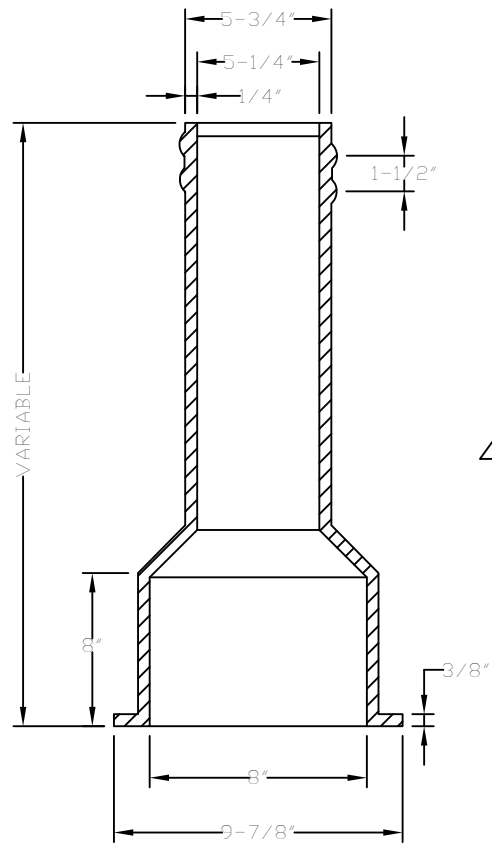
DRAWING NOT TO SCALE

AIR RELEASE RECLAIMED WATER MANHOLE RING AND COVER

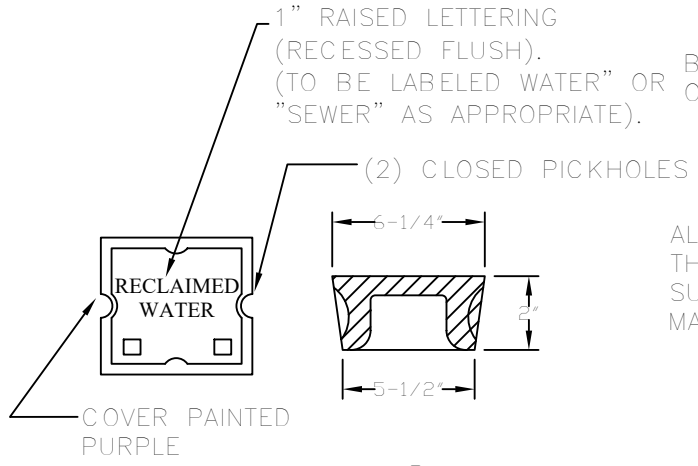
TOWN OF HOLLY SPRINGS ENGINEERING DEPARTMENT

STANDARD DETAIL NUMBERHS1108	
DATE	REVISIONS
7/24/09	

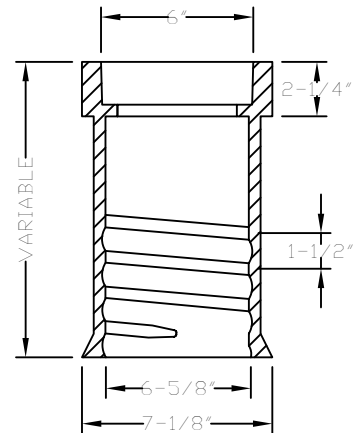




BOTTOM SECTION



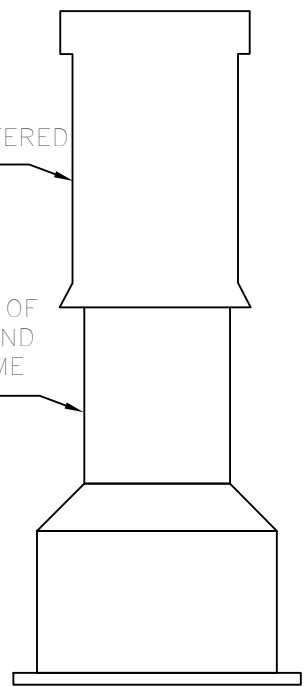
LID



SQUARE UPPER SECTION

BOX SHALL BE CENTERED OVER VALVE

ALL PARTS SHALL BE OF THE SAME MATERIAL AND SUPPLIED BY THE SAME MANUFACTURER



COMPLETE BOX

- NOTES:
1. VALVE BOX COVER SHALL WEIGH A MINIMUM 13 LBS.
  2. ENTIRE VALVE BOX ASSEMBLY & COVER SHALL BE CAST FROM 35 GRAY IRON.
  3. ASSEMBLY SHALL BE DOMESTICALLY MADE AND MANUFACTURED IN THE U.S.A.
  4. ASSEMBLY OTHER THAN COVER SHALL BE PAINTED BLACK.
  5. INSTALLATION SHALL BE IN ACCORDANCE WITH STANDARD POTABLE WATER REQUIREMENTS.

DRAWING NOT TO SCALE

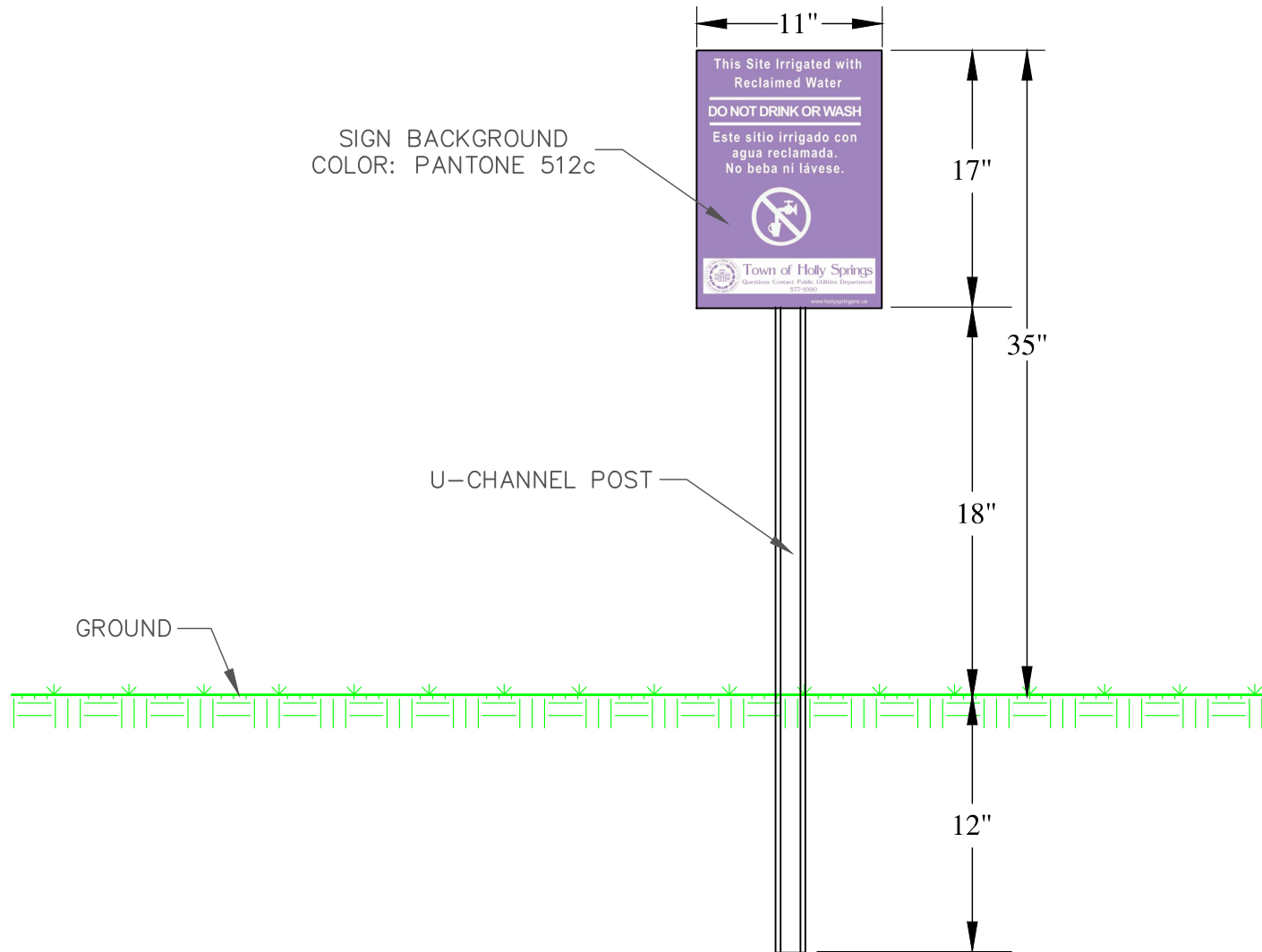
STANDARD VALVE BOX (RECLAIMED WATER)

TOWN OF HOLLY SPRINGS ENGINEERING DEPARTMENT

STANDARD DETAIL NUMBERHS1109

DATE	REVISIONS
7/24/09	





DRAWING NOT TO SCALE

# RECLAIMED WATER USAGE SIGN

TOWN OF HOLLY SPRINGS ENGINEERING DEPARTMENT

STANDARD DETAIL NUMBER: **HSM10**

DATE REVISIONS

11/6/18

