

NOTE:
THIS DETAIL TO BE USED OUTSIDE OF RIGHT OF WAY ONLY.

DRAWING NOT TO SCALE

STANDARD EXTERIOR HANDRAIL DETAIL

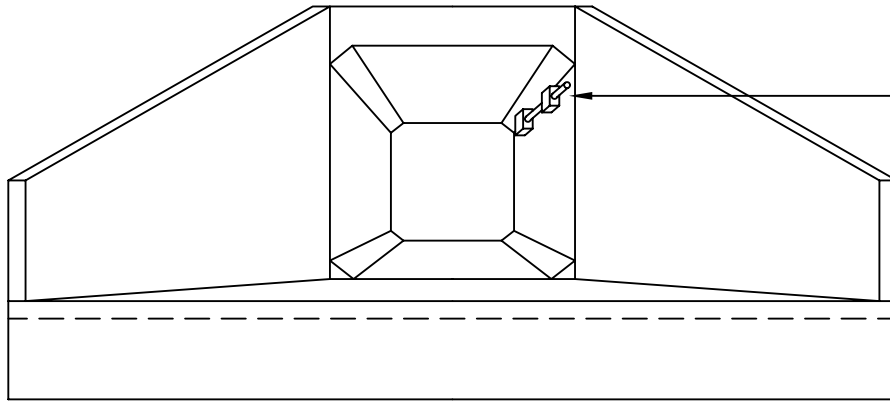
TOWN OF HOLLY SPRINGS ENGINEERING DEPARTMENT

STANDARD DETAIL NUMBERHS001

DATE REVISIONS

7/24/09





LITHONIA WALL - PAK
TWP150F w/ TWPG WIRE
GUARD, OR APPROVED EQUAL

FRONT VIEW

JOINTS TO BE SEALED WITH
MASTIC THEN GROUTED WITH
NON-SHRINK PORTLAND CEMENT
GROUT

HEADWALLS
w/ WINGWALLS
REQUIRED ON
BOTH ENDS

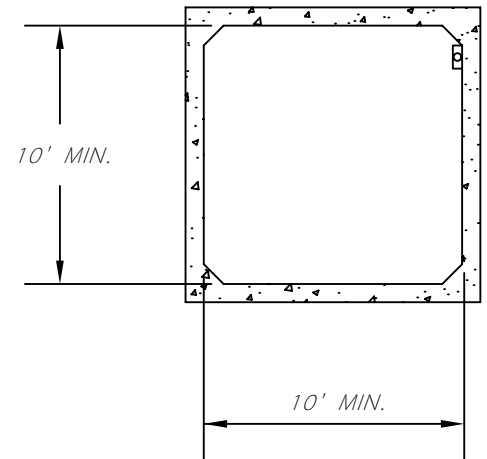
LIGHT

CONDUIT

SEALING OF FIXTURES TO BE
DESIGNED IN ACCORDANCE w/ IES STANDARDS

PRECAST CONCRETE BOX CULVERT CONFORMING
TO ASTM C 789M OR ASTM C 850M

0.5% MIN. SLOPE



NOTES:

APPROPRIATE SIGNAGE MAY BE REQUIRED
AT ENTRANCE TO INDICATE NARROWING TRAIL
WIDTH AND LIMITED VERTICAL CLEARANCE.

DRAWING NOT TO SCALE

PRECAST CONCRETE PEDESTRIAN/BICYCLE UNDERPASS

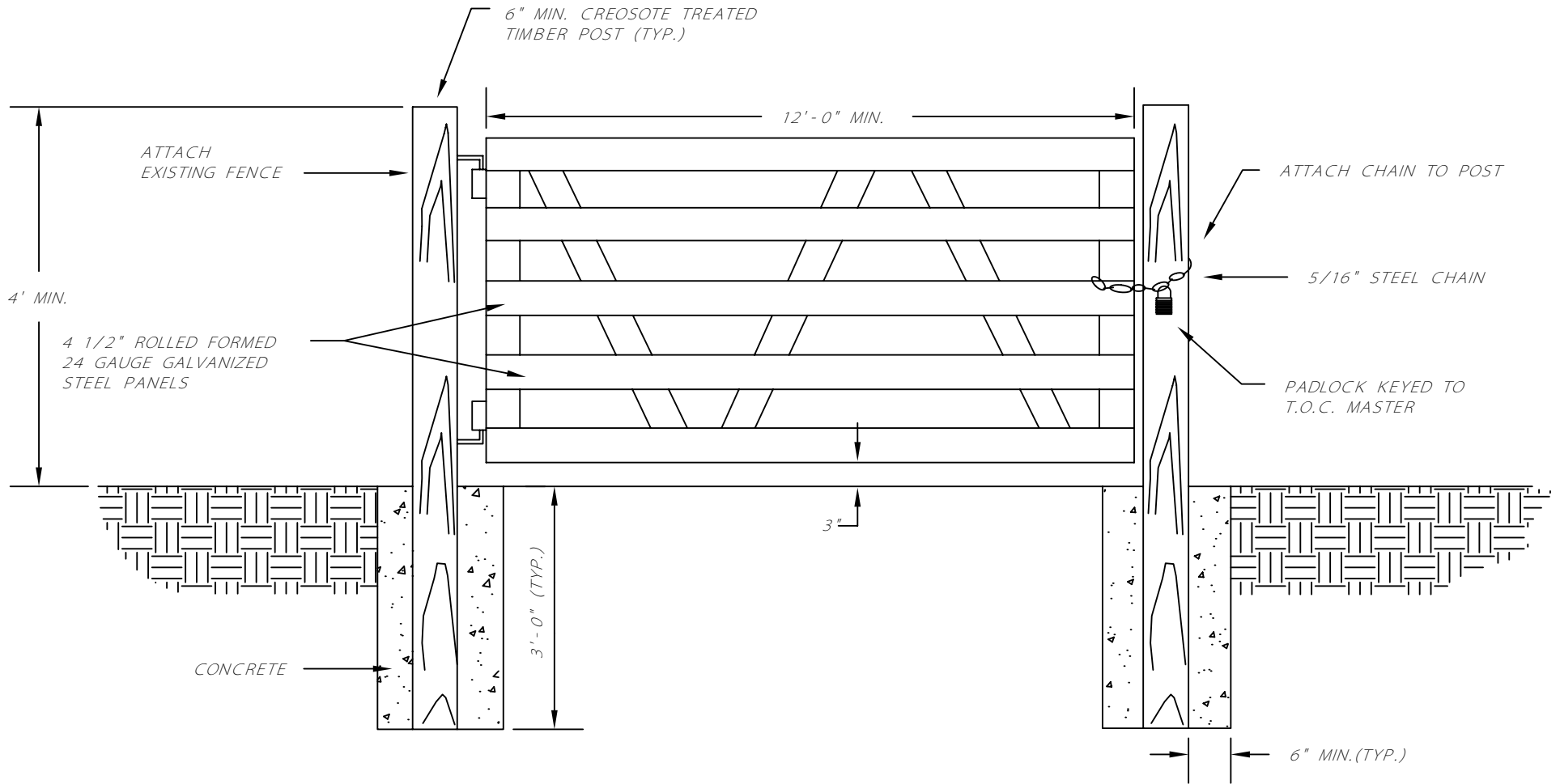
STANDARD DETAIL NUMBER: HS002

DATE REVISIONS

7/24/09

TOWN OF HOLLY SPRINGS ENGINEERING DEPARTMENT





NOTES:

A FENCE GATE IS REQUIRED AT THE LOCATION WHERE THE SANITARY SEWER LINE CROSSES A FENCE. IN RESIDENTIAL AREAS THE FENCE GATE MAY BE DELETED OR ALTERNATE FENCE GATES MAY BE USED AS APPROVED BY THE DIRECTOR OF ENGINEERING.

DRAWING NOT TO SCALE

FENCE GATE

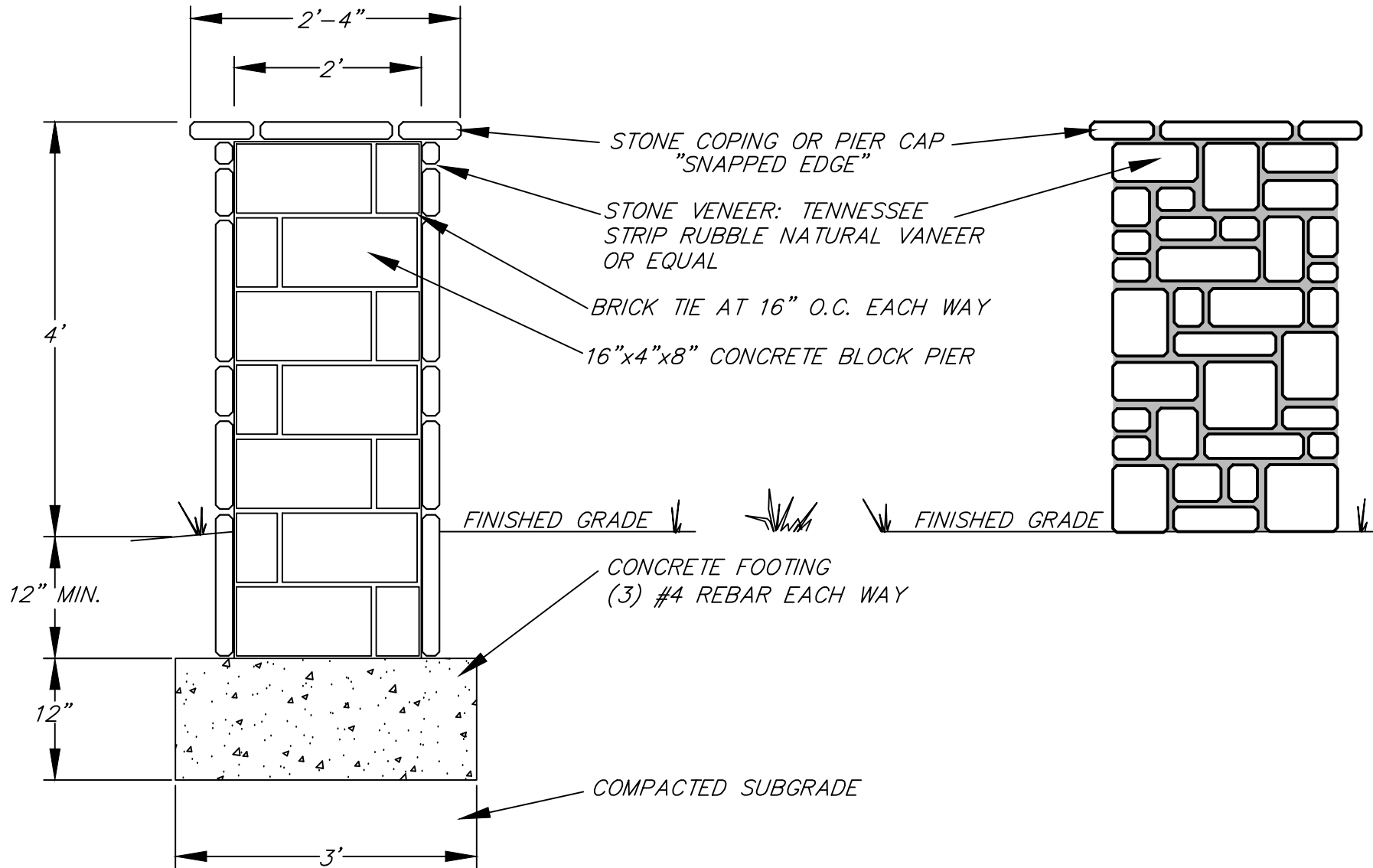
TOWN OF HOLLY SPRINGS ENGINEERING DEPARTMENT

STANDARD DETAIL NUMBER:HS003

DATE REVISIONS

7/24/09





DRAWING NOT TO SCALE

STONE COLUMN DETAIL

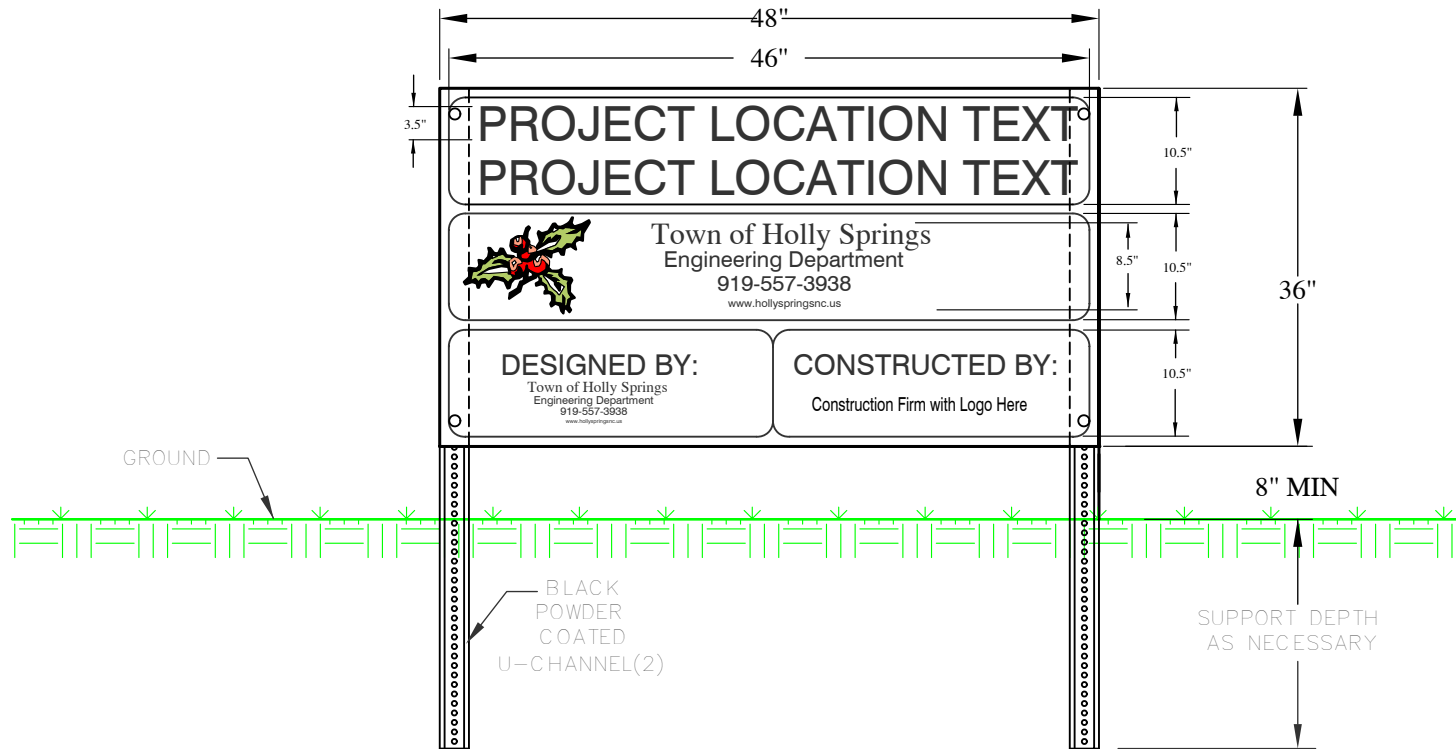
TOWN OF HOLLY SPRINGS ENGINEERING DEPARTMENT

STANDARD DETAIL NUMBER: **HS004**

DATE	REVISIONS
4/26/19	

4/26/19





NOTES:

1. 36" X 48" X 1/2" MDO SIGN WITH U-CHANNEL POSTS.
2. INDIVIDUAL PANELS TO BE SECURED WITH WEATHER RESISTANT SCREWS AND WING NUTS.

DRAWING NOT TO SCALE

PROJECT IDENTIFICATION SIGN

TOWN OF HOLLY SPRINGS ENGINEERING DEPARTMENT

STANDARD DETAIL NUMBERHS005

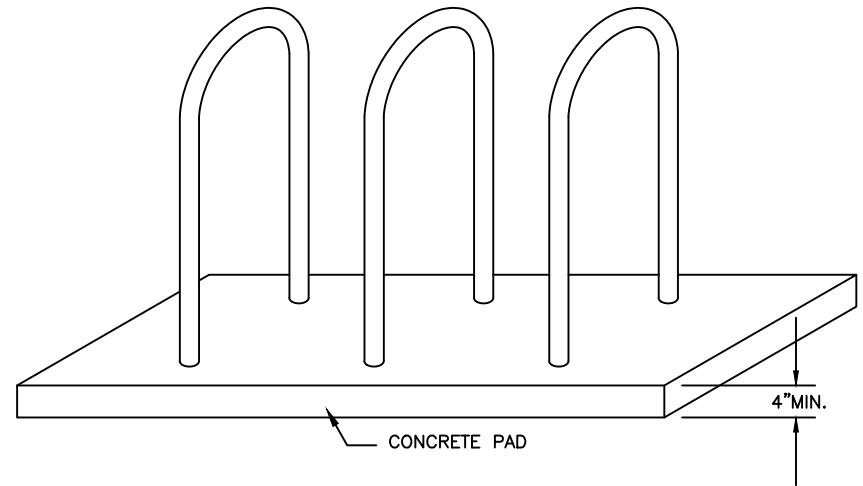
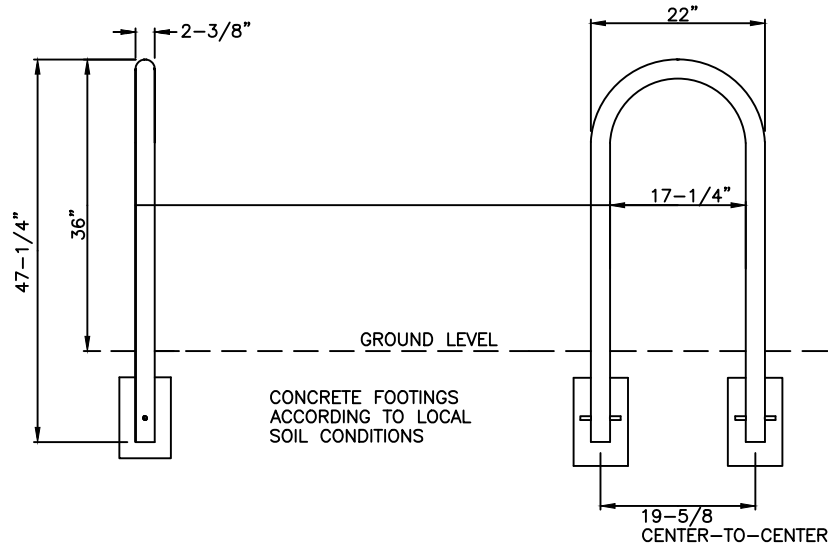
DATE	REVISIONS
01/10/13	



HOLE IS PRESENT ONLY WHEN GALVANIZED OPTION IS SPECIFIED

FORMED FROM 2-3/8" O.D. SCHEDULE 40 STEEL PIPE

STEEL ANCHOR ROD IS INSERTED THROUGH THE TUBULAR POST TO HELP SECURE THE ASSEMBLY IN THE CONCRETE FOOTING



NOTES:

1. ALL FABRICATED METAL COMPONENTS TO BE STEEL SHOTBLASTED, ETCHED, PHOSPHATIZED, PREHEATED, AND ELECTROSTATICALLY POWDER-COATED WITH T.G.I.C. POLYESTER POWDER COATINGS. PRODUCTS ARE FULLY CLEANED AND PREHEATED, PREHEATED AND COATED WHILE HOT TO FILL CREVICES AND BUILD COATING FILM. COATED PARTS ARE THEN FULLY CURED TO COATING MANUFACTURER'S SPECIFICATIONS. THE THICKNESS OF THE RESULTING FINISH AVERAGES 8-10 MILS (200-250 MICRONS).
2. THIS BIKE RACK MUST BE PERMANENTLY AFFIXED IN THE GROUND.
3. BIKE RACK MANUFACTURED BY SECURE SITE DESIGN OR SIMILAR.
4. MIN. 3 RACKS REQUIRED TO PROVIDE 6 BIKE SPACES.

DRAWING NOT TO SCALE

STANDARD IN-GROUND MOUNT BIKE RACK

TOWN OF HOLLY SPRINGS ENGINEERING DEPARTMENT

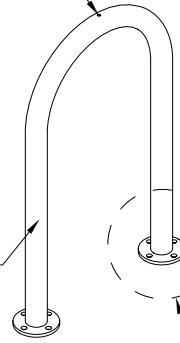
STANDARD DETAIL NUMBER: **HS007**

DATE	REVISIONS
8/27/18	



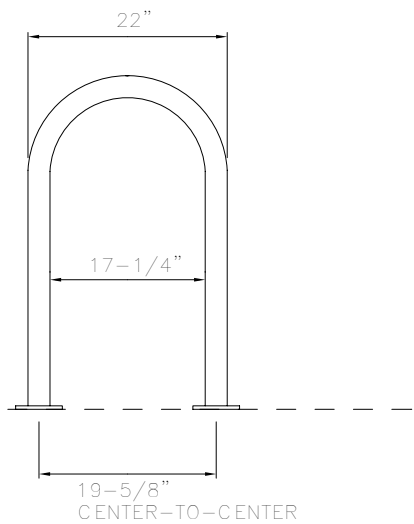
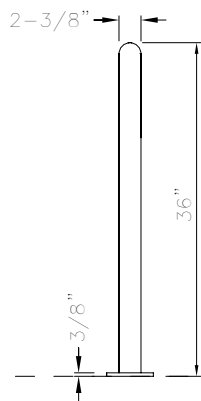
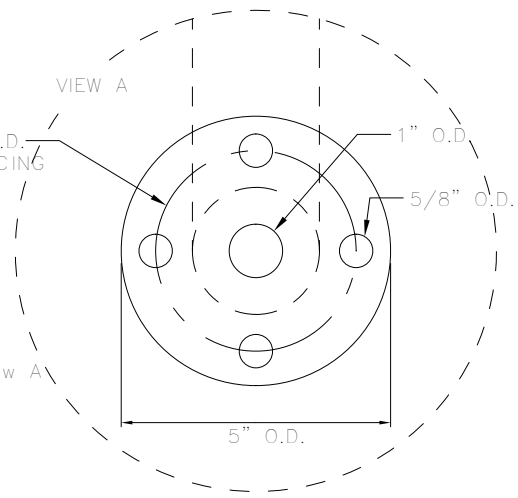
HOLE IS ONLY PRESENT WHEN GALVANIZED OPTION IS SPECIFIED

FORMED FROM 2-3/8" O.D. SCHEDULE 40 STEEL PIPE



3-3/4" O.D. HOLE SPACING

VIEW A



GROUND LEVEL

NOTES:

1. ALL FABRICATED METAL COMPONENTS TO BE STEEL SHOTBLASTED, ETCHED, PHOSPHATIZED, PREHEATED, AND ELECTROSTATICALLY POWDER-COATED WITH T.G.I.C. POLYESTER POWDER COATINGS. PRODUCTS ARE FULLY CLEANED AND PREHEATED, PREHEATED AND COATED WHILE HOT TO FILL CREVICES AND BUILD COATING FILM. COATED PARTS ARE THEN FULLY CURED TO COATING MANUFACTURER'S SPECIFICATIONS. THE THICKNESS OF THE RESULTING FINISH AVERAGES 8-10 MILS (200-250 MICRONS).
2. THIS BIKE RACK MUST BE PERMANENTLY AFFIXED IN THE GROUND.
3. LOCATE ANCHOR BOLTS AFTER THE BIKE RACK IS IN PLACE.
4. BIKE RACK MANUFACTURED BY SECURE SITE DESIGN OR SIMILAR.

DRAWING NOT TO SCALE

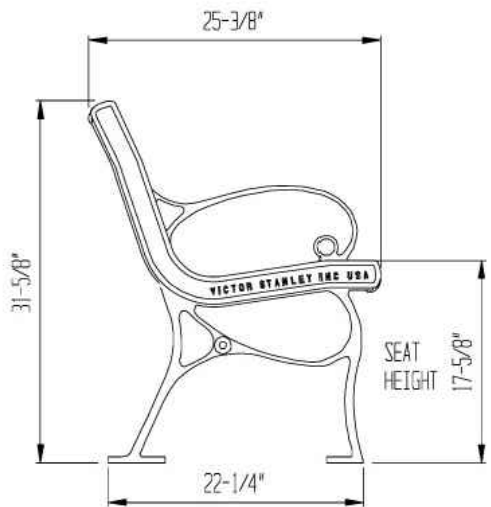
STANDARD SURFACE MOUNT BIKE RACK

STANDARD DETAIL NUMBERHS008

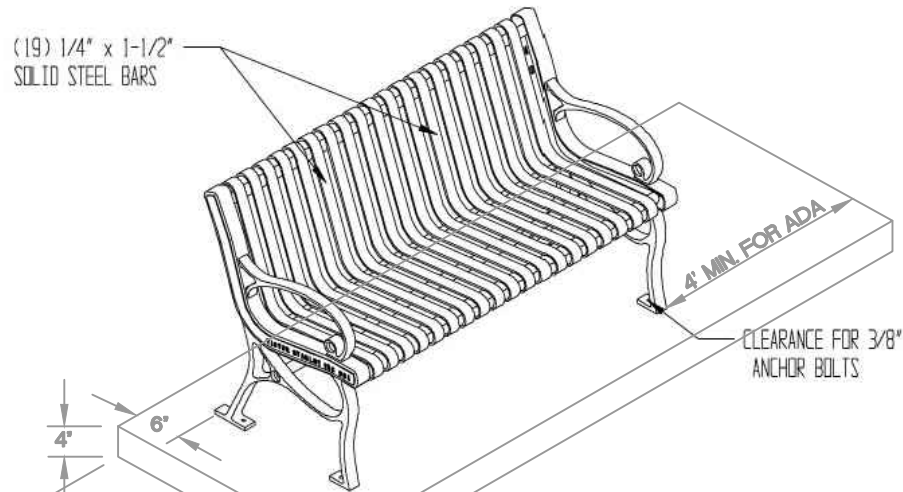
DATE	REVISIONS
7/24/09	

TOWN OF HOLLY SPRINGS ENGINEERING DEPARTMENT

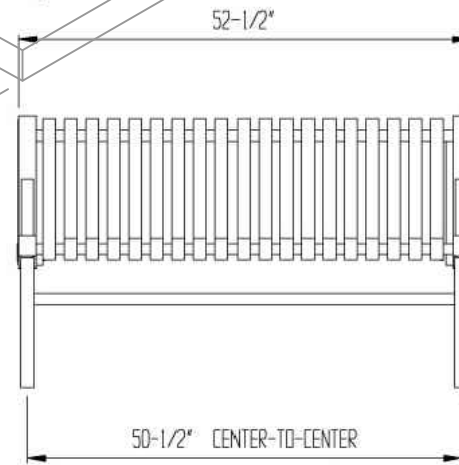
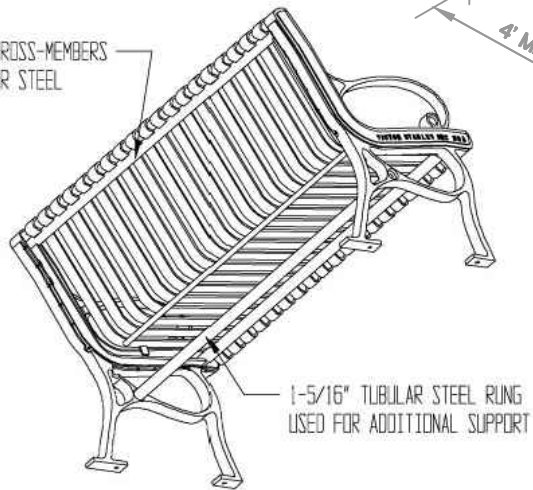




(19) 1/4" x 1-1/2"
SOLID STEEL BARS



INTEGRAL WELDED CROSS-MEMBERS
OF 1-5/16" TUBULAR STEEL



CENTER-TO-CENTER DISTANCES ARE APPROXIMATE
(VARIATIONS IN CASTINGS ARISE FROM DIFFERENT RATES OF COOLING)

NOTES:

1. MATERIAL SHALL BE DUCTILE CASTING WITH GALVANIZED STEEL COMPONENTS POWDER COATED FOR WEATHER PROTECTION.
2. MANUFACTURER VICTOR STANLEY, INC OR SIMILAR.
3. TO BE BOLTED IN CONCRETE IN GROUND.

DRAWING NOT TO SCALE

METAL BENCH - 52"

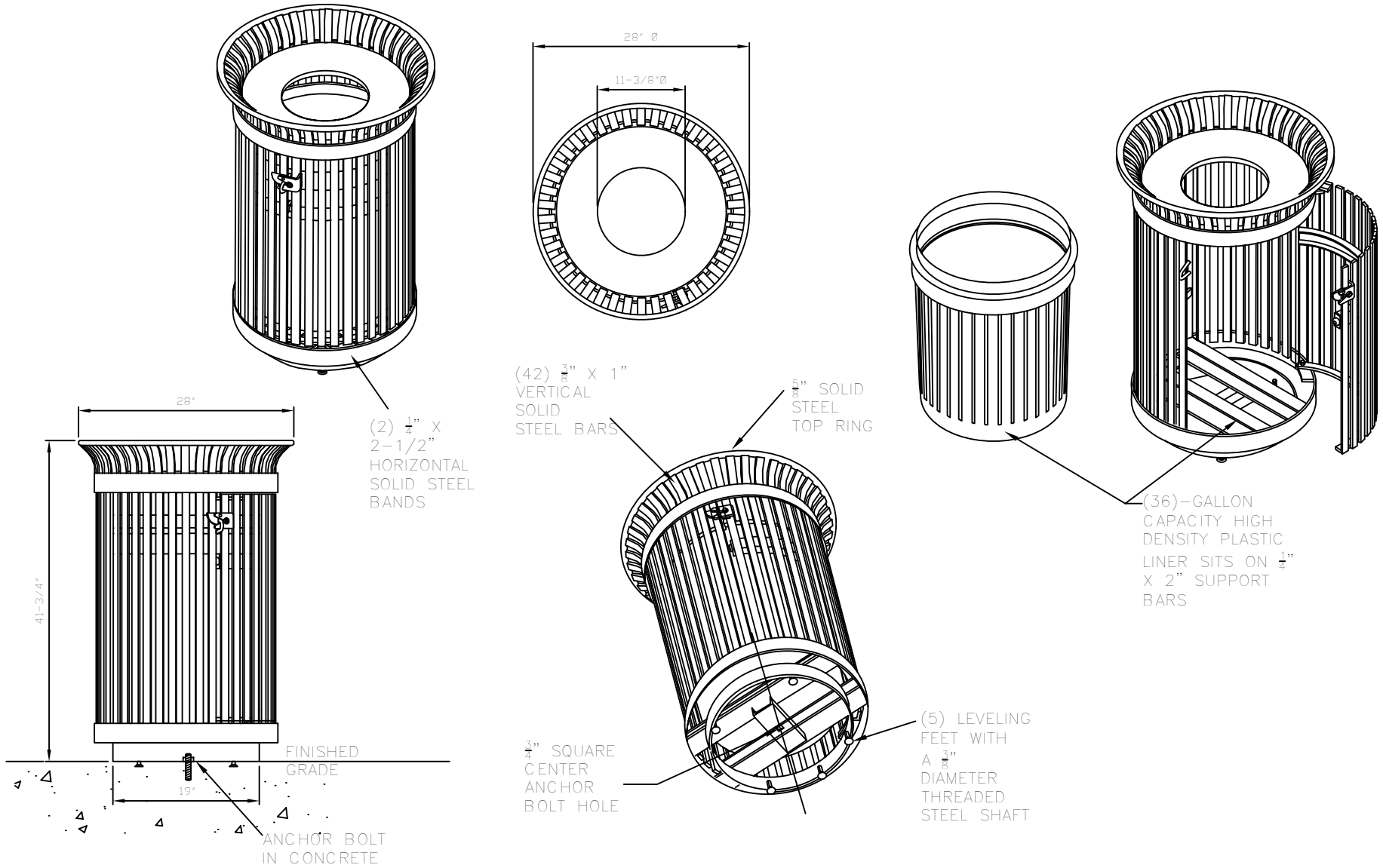
TOWN OF HOLLY SPRINGS ENGINEERING DEPARTMENT

STANDARD DETAIL NUMBER: **HS009**

DATE REVISIONS

8/27/18





- NOTES:
1. ALL STEEL COMPONENTS TO BE POWDER-COATED TO PREVENT RUST
 2. TRASH ENCLOSURE TO BE PERMANENTLY AFFIXED TO THE GROUND WITH ANCHOR BOLTS
 3. VICTOR STANLEY SD-42 IRONSITES SERIES 36 GALLON SIDE-DOOR-OPENING LITTER RECEPTACLE OR SIMILAR

DRAWING NOT TO SCALE

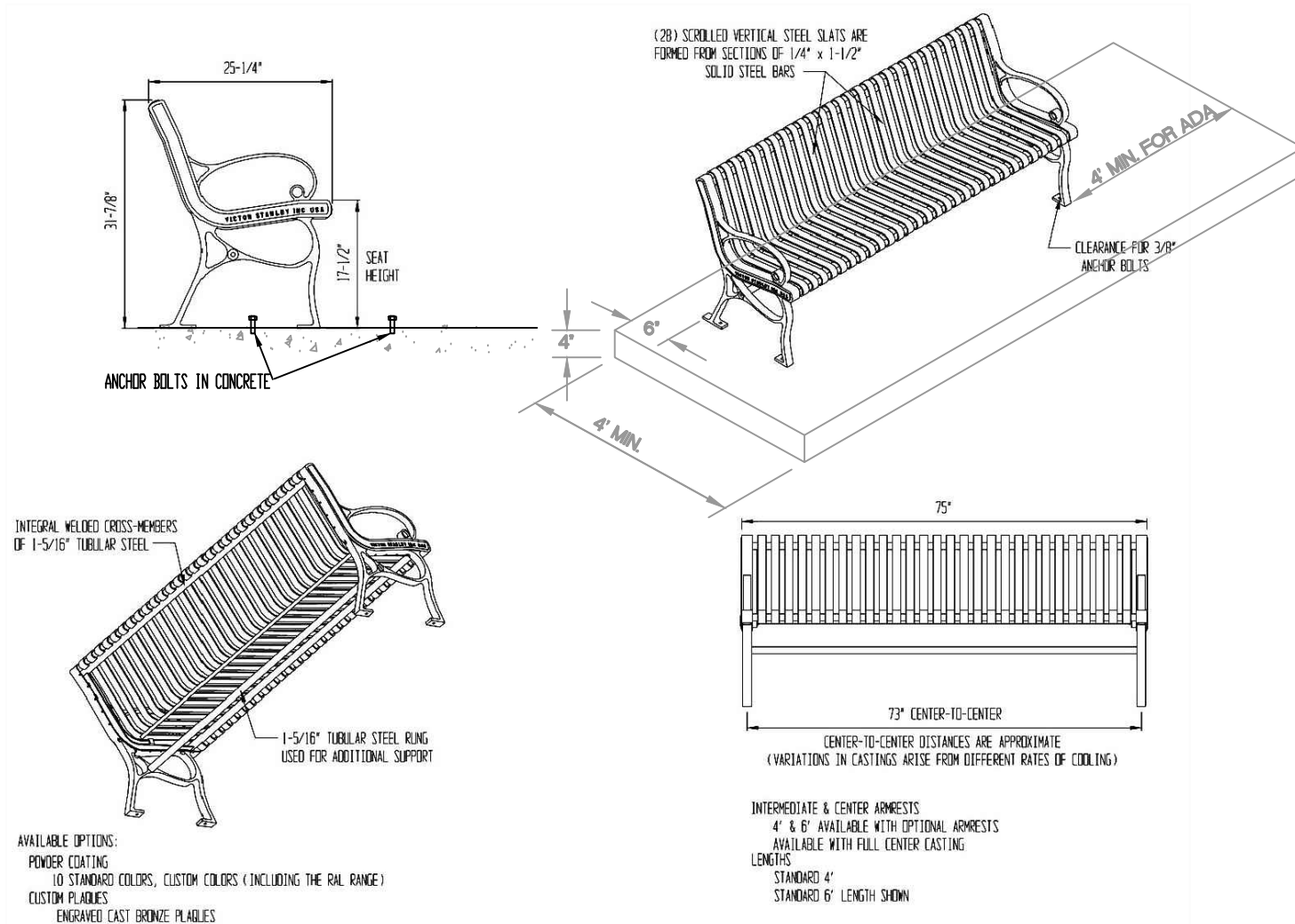
METAL TRASH CAN

TOWN OF HOLLY SPRINGS ENGINEERING DEPARTMENT

STANDARD DETAIL NUMBER HS010

DATE	REVISIONS
10/07/09	





NOTES:

1. MATERIAL SHALL BE DUCTILE CASTINGS WITH GALVANIZED STEEL COMPONENTS POWDER COATED FOR WEATHER PROTECTION.
2. LOCATED ACHOR BOLTS AFTER BENCH IS IN PLACE.
3. PERMANENTLY AFFIXED BENCH TO THE GROUND.
4. MANUFACTURER VICTOR STANLEY MODEL NO. CR-138, INC OR SIMILAR.

DRAWING NOT TO SCALE

METAL BENCH - 6FT

TOWN OF HOLLY SPRINGS ENGINEERING DEPARTMENT

STANDARD DETAIL NUMBER: HSO11

DATE	REVISIONS
8/27/18	

