



# FIGURE 4.1

Existing Pedestrian Facilities

Existing

- Sidewalk on Both Sides
- Sidewalk on One Side
- Greenway

Transportation Features

- US Highway
- NC Highway
- Major Road
- Minor Street
- Railroad
- Future I-540

Environmental Features

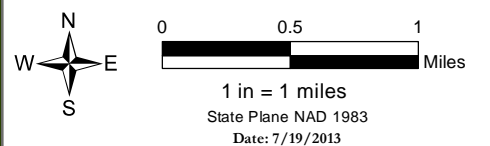
- Body of Water
- 240' Shearon Harris Reservoir Elevation
- River/Stream
- Wetland
- Park

Community Resources

- School
- Library

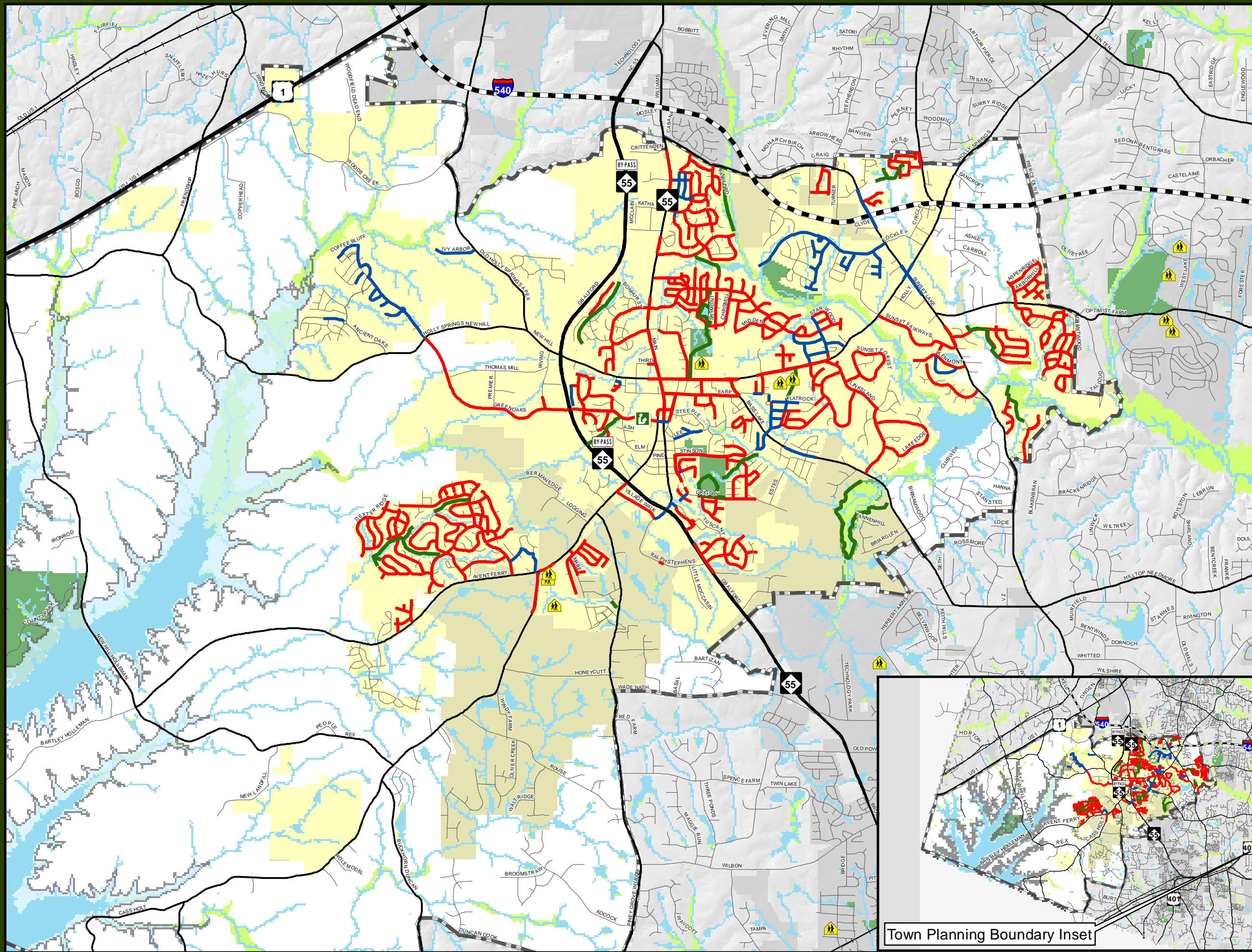
Administrative Boundaries

- Holly Springs Town Limit
- Holly Springs ETJ
- Other Municipality
- Comprehensive Plan Study Area



For More Information contact  
Town of Holly Springs  
Engineering Department  
P.O. Box 8  
Holly Springs, NC 27540  
919.557.3926  
www.hollyspringsnc.us

The Town expressly denies any and all responsibility for errors, if any, in the information/data or for the misuse of the information/data by the user or anyone else. The user understands that he or she should verify the accuracy of the information/data before using it.



Town Planning Boundary Inset